

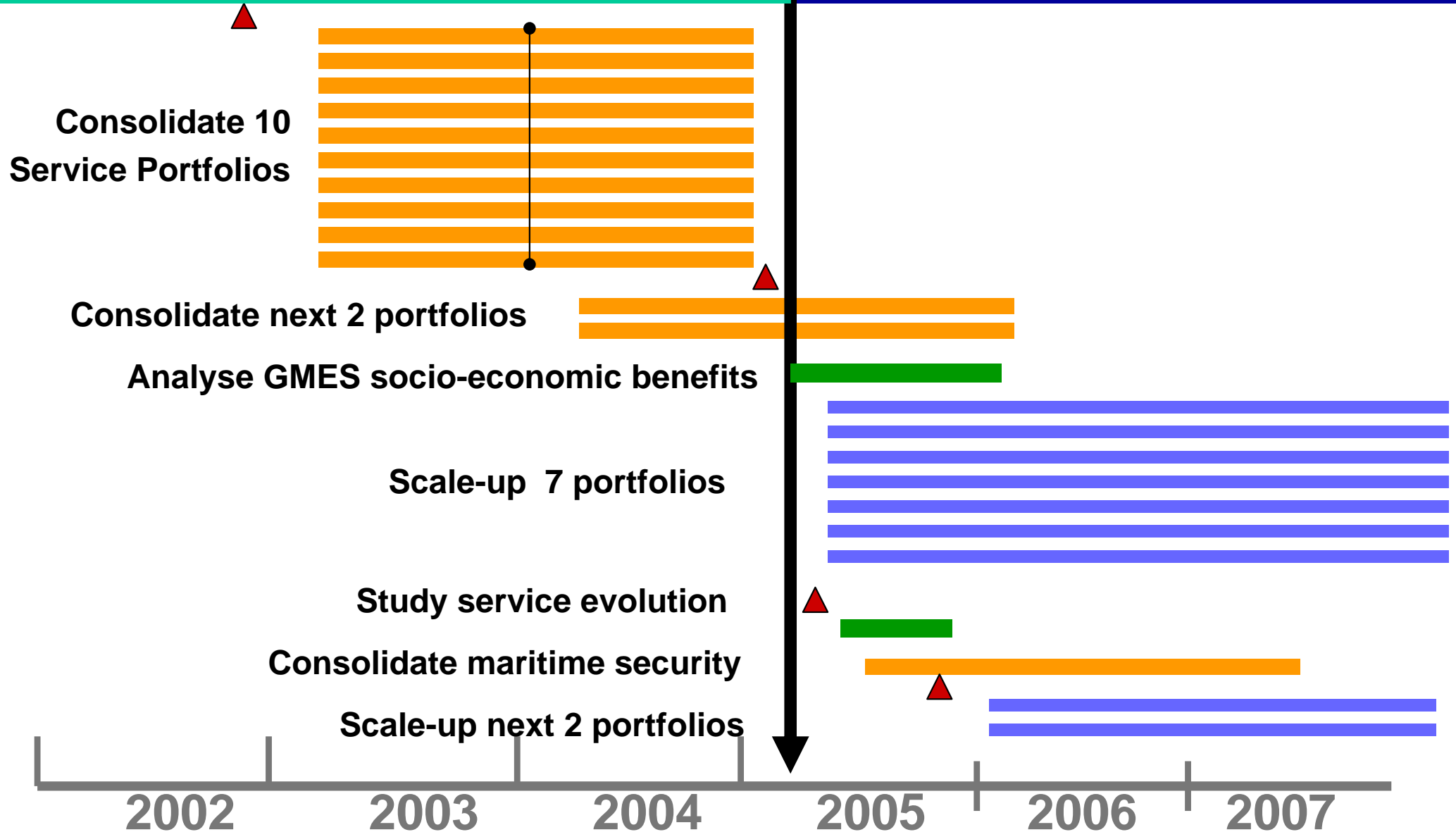
# GMES Services Element

- **ESA Programme dedicated to GMES**
  - Approved: ESA Ministerial Council Nov 2001
  - Earthwatch element
- **Deliver Operational Services**
  - Support for environmental & security policies
- **Budget**
  - 83 Meuro (+increased subscriptions => 97Meuro)
  - 5 years

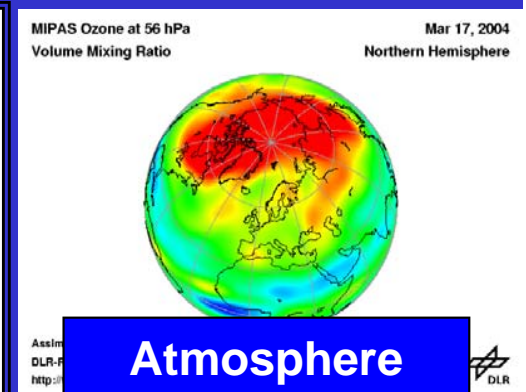
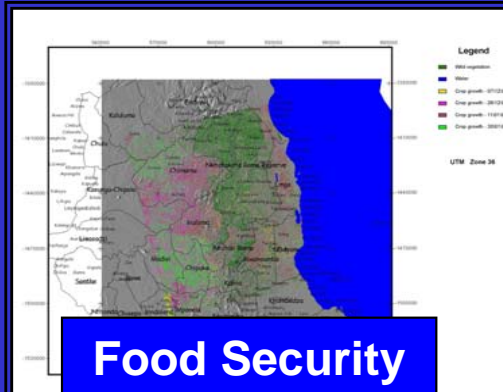
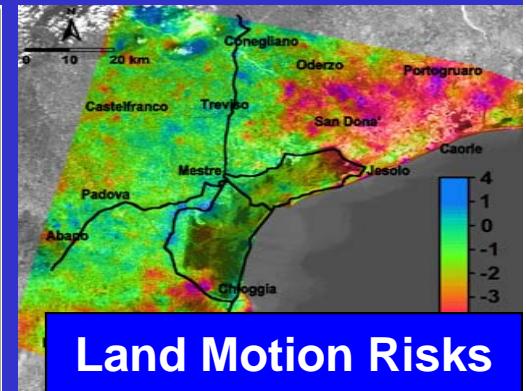
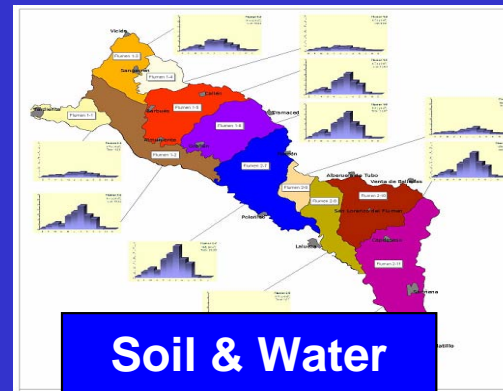
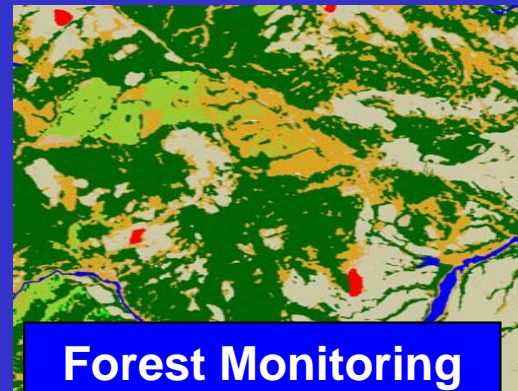
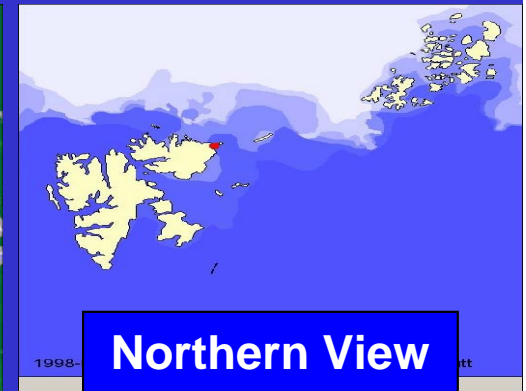
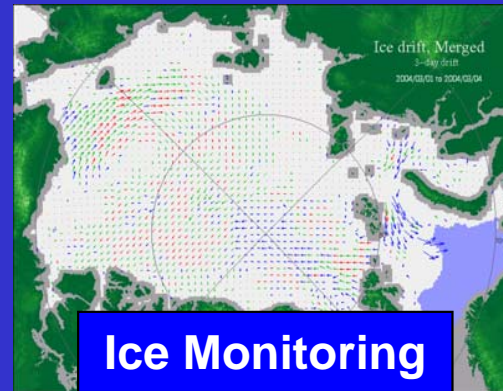
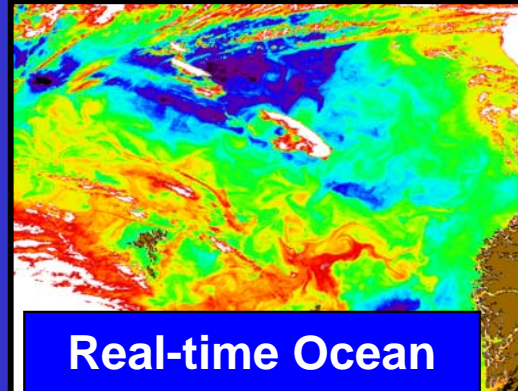
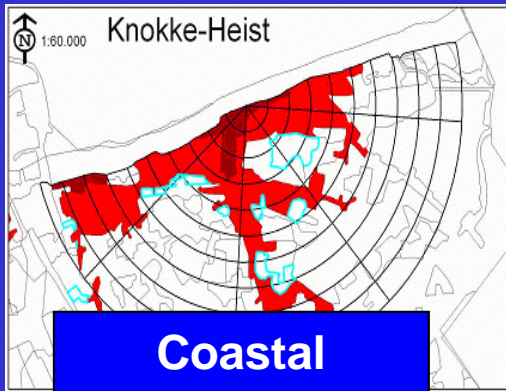
# What has GSE done : What is planned?

## Consolidate services

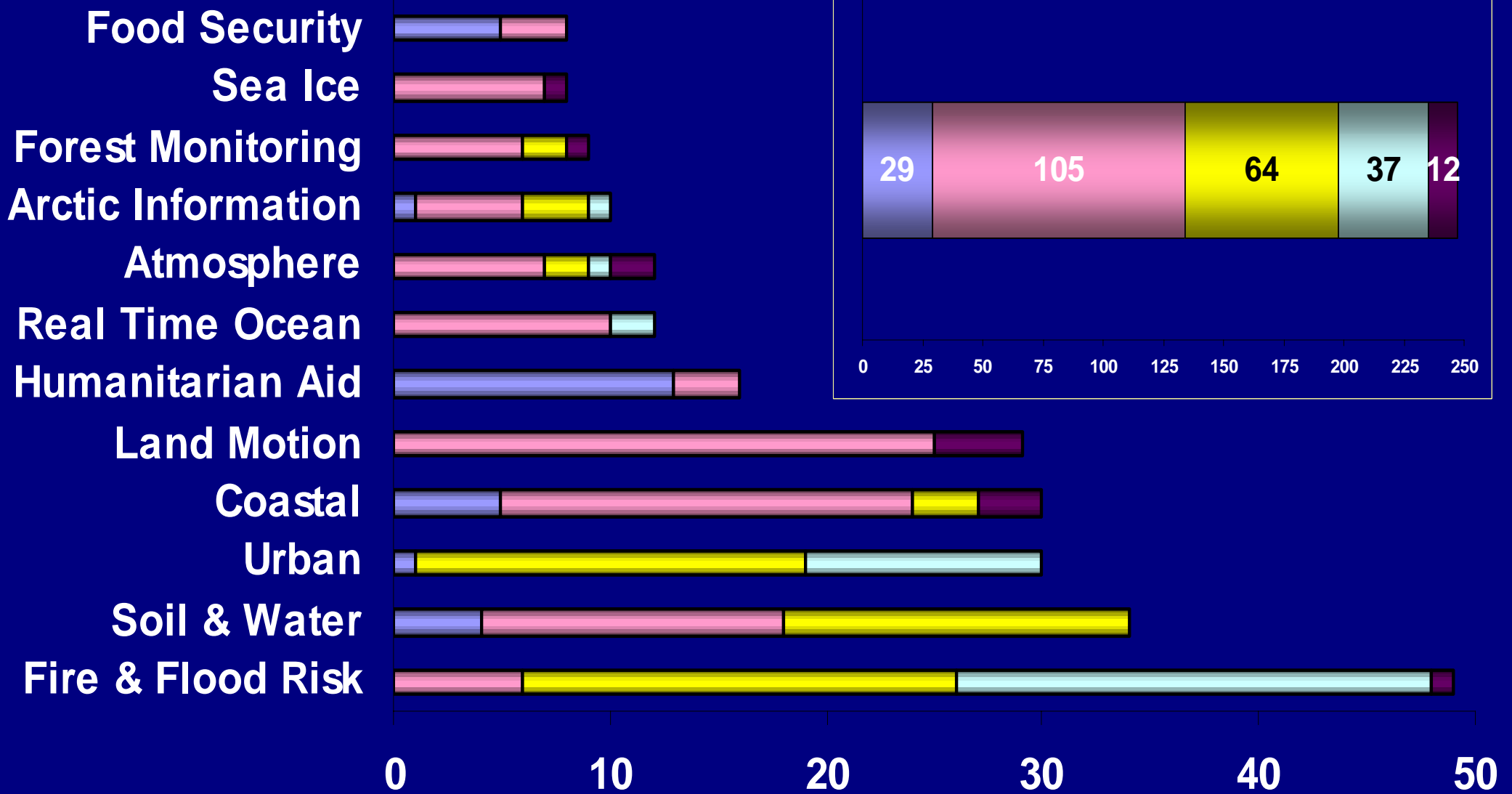
## Scale-up services



# 12 GMES Service Portfolios

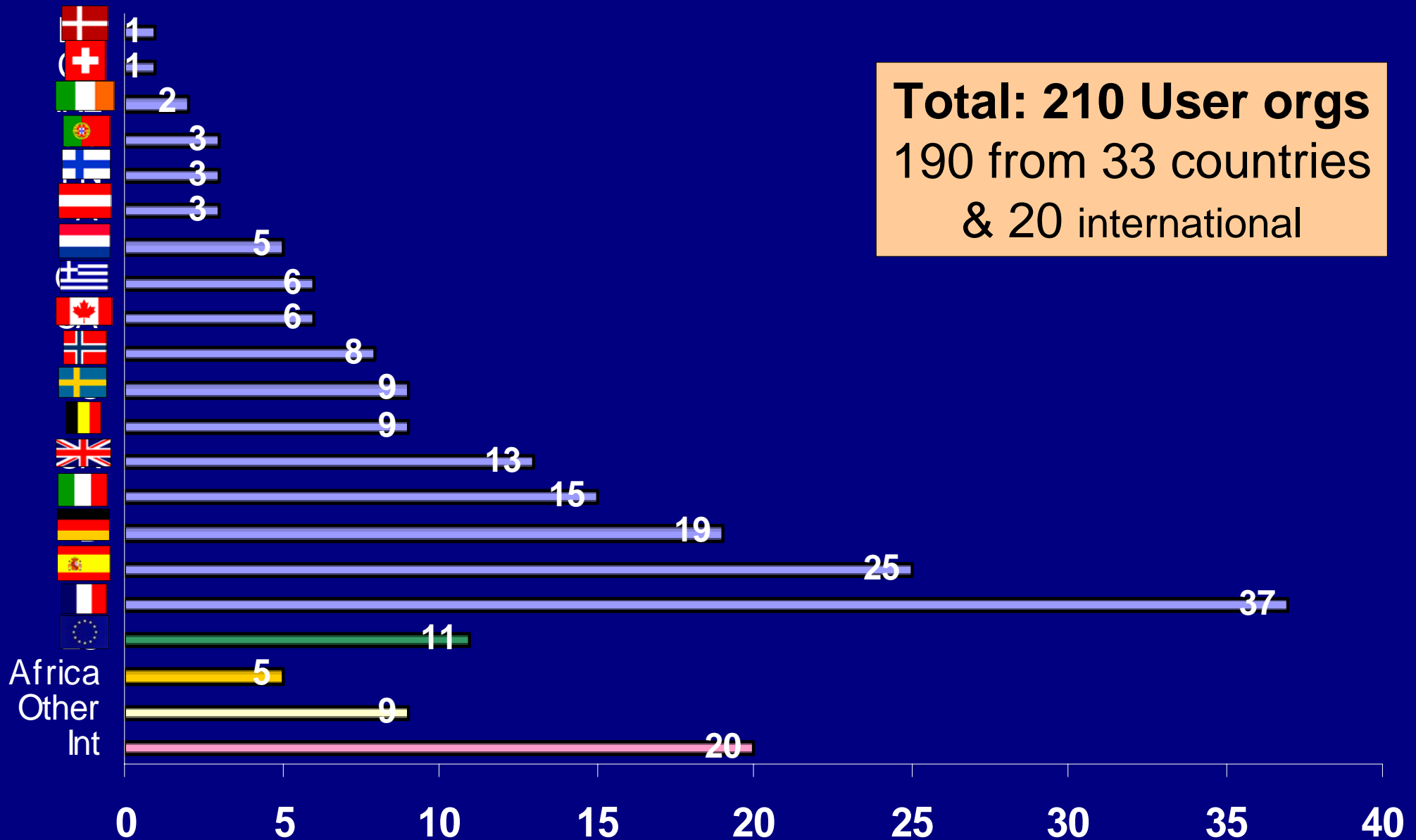


# Who are the User Organizations ?



International / EU
  National
  Regional
  Local
  Private

# Where are the User Organizations ?





# Why do Public Users need GMES ?

	Forest Monitoring	SAGE	Urban Services	CoastWatch	ROSES	ICEMON	Northern View	Risk EOS	TerraFirma	GMFS	RESPOND	PROMOTE
EU: Aarhus Convention	•	•	•	•	•	•	•	•	•			•
EU: Civil Protection Action Progs. / Coop. Mechanisms								•	•			
EU: Policies on Food Aid / Security & Rural Poverty										•	•	
EU: Integrated Coastal Zone Management (R )			•	•								
EU: Soils & Forest Strategies	•	•	•					•				
EU: Water Framework Dir. (D)	•	•	•	•	•		•	•				
EU: CLRTAP												•
EU: ECHO											•	
EU: Northern Dimension Action Plan						•	•					
6th EAP - tackle climate change	•					•	•	•				•
6th EAP - protect nature & wildlife	•	•	•	•	•		•	•				
6th EAP - address environment & health	•	•	•	•	•		•					•
6th EAP - preserve natural resources & manage waste	•	•	•	•								
Int: Arctic Environmental Protection Strategy						•	•					
Int: Convention on Biological Diversity	•	•	•	•			•	•				
Int: RAMSAR Convention on Wetlands of Int. Import.		•		•								
Int: UN Convention on Combating Desertification		•							•			
Int: UNCED Agenda 21												•
Int: Kyoto Protocol Articles 2, 3, 6, 12	•											•
Int: UN Mandates (OCHA, UNDP, UNHCR, UNICEF, WFP)											•	
Int: Mandates of various NGO's											•	
Int: SOLAS						•	•					
Int: MARPOL				•	•		•					

**Main Policy Areas Addressed in Stage 1**

# What are the GMES User Needs How are they structured ?

## European-Level

- Driven by EU Policies
- EC DGs and Community Institutions

## National-Level

- Driven by National policies & international commitments
- National ministries & Institutions

## Regional-Level

- Driven by national policy & regional issues
- Civil Protection Units, Regional Government Agencies

## Local-Level

- Driven by local issues, national law and institutional statute
- Municipalities, Port Authorities

# What has GSE produced so far ?

- **Documented answers**

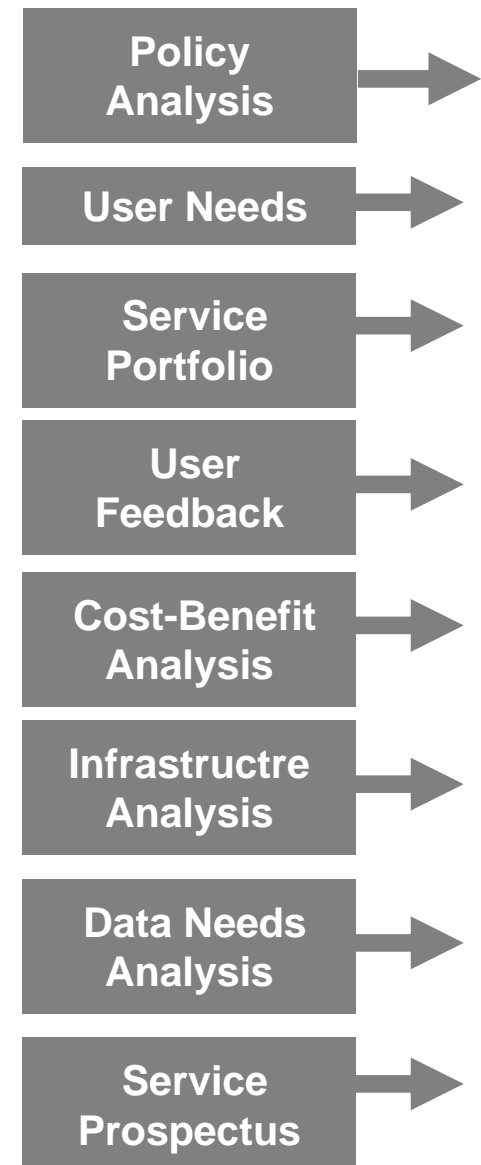
- **What information is needed?**
- **What services can be provided?**
- **What are the benefits for Europe's Citizens?**
- **Do the benefits justify the costs**

- **Geographic scope**

- **Global; continental; regional; national; local**

- **Timescale**

- **Present + 10 years**





# **GSE Service Element : 2005- 2008**

## **Scaling up consolidated Services**

### **Starting Sept 2005**

- Polar Information Services
- Marine & Coastal Information Services
- Flood & Fire Risk Services
- Geo-hazard (Land motion) Information Services
- Food Security Information Services
- Forest Monitoring Services
- Land Information Services

### **Starting Early 2006**

- Atmospheric Monitoring Services
- Humanitarian Aid Information Services

# Polar Information Services

## Service Portfolio

- Iceberg Surveillance
- Sea-ice floe edge conditons
- River Ice Maps
- Glaciers Monitoring
- Hi-res ice charts
- Sea-ice thjckness charts
- Medium-res ice charts (Greenland)
- Met-ice-ocean regional forecasting
- Oil spill monitoring in Canada

## Providers

- Consortium led by C-Core (Canada)
- 10 Service providers, from 7 countries

## Users

- 22 national user organizations from 6 countries
- International ice patrol, EEA

# Forest Monitoring Services

## Service Portfolio

- Pan European forest Monitoring
- Support to National Report for UNFCCC & KP on LULUCF
- Forest Information updates
- Support to Environmental Monitoring
- Forest disturbance detection & post-monitoring
- Support to management & report for CDM Projects
- ( typically at map scale 1:50,000)

## Providers

- Consortium led by GAF AG
- 13 Service providers, 3 research partners, 9 countries

## Users

- 17 user organizations including 12 national bodies
- UNFCCC NPOCs, EEA, & regional forest authorities
- 1 commercial forestry company

# Flood & Fire Risk Information Services

## Service Portfolio

- Burn Scar Mapping
- Assets Mapping
- Flood Risk Analysis
- Flash Flood Early Warning
- Rapid Mapping

## Providers

- Consortium led by EADS Astruim
- 10 Service providers from 5 countries

## Users

- 18 user organizations including
- 6 national bodies, 7 regional, 5 local
- Civil protection authorities

# Marine & Coastal Information Services

## Service Portfolio

- Oil-spill detection & notification (60mins)
- Oil spill drift forecasting (hourly, up to 72 hours ahead)
- Coastal water quality monitoring & alert (bi-weekly)
- HAB monitoring & forecasting
- Seasonal water quality assessment European waters (2-10 km grid)
- Metocean data provision (ocean color, wind wave, current, salinity)

## Providers

- Consortium led by Alcatel France
- 20 Service providers from 8 countries
- Includes Met-Os & industrial providers

## Users

- 11 national level European organizations
- Regional environment agencies (I, E, D) & Port authorities
- EEA, DG-ENV, EMSA

# **Geo-hazard (Land Motion) Risk Information Services**

## **Service Portfolio**

- **Urban Subsidence:**
  - **Basic INSAR Measurement**
  - **Initial Interpretation**
  - **Modeled interpretation**
- **Landslides**
  - **Inventory**
  - **Monitoring**

## **Providers**

- **Consortium led by NPA (UK)**
- **11 Service providers from 5 countries**

## **Users**

- **UP to 50 user organizations, focus on EU 25+**
- **Geological surveys & institutes, Civil engineering**
- **Civil protection authorities**



# Food Security Information Services

## Service Portfolio

- **Rush Delivery of Vegetation State indicators**
- **Tailored Synthesis to support crop & food assessment missions (WFP, FAO)**
- **Detailed annual national-scale crop monitoring**

## Providers

- **Consortium led by Vito (B)**
- **8 Service providers from 5 countries**

## Users

- **African national ministries (Malawi, Senegal Kenya,)**
- **African regional institutions (SADC, AGHRYMET)**
- **International agencies: FAO-GIEWS, WFP-VAM, EC/JRC MARS,**

# Land Information Services

## Service Portfolio

- **European Urban Atlas (components)**
- **Impervious areas and sealing levels**
- **In land water quality contamination**
- **Irrigation /Agricultural water consumption**

## Providers

- **Consortium led by Info-terra (D), being finalised**
- **~10 Service providers from 5+ countries**

## Users

- **50+ European user organizations**
- **National & Regional Environmental Agencies**
- **Municipal Authorities**
- **EEA, DG-ENV, DG-Regio**

# Atmospheric Monitoring

## Providers

KNMI	
DLR	
DWD	
RIU	
U Bremen	
CERC	
Prev'Air	
ACRI-ST	
FMI	

## Services

Deliver a Service on Stratospheric Ozone

- *past, present, forecast*

Deliver a Service on UV Radiation:

- *past, present, forecast*

Demonstrate a Service on Air Quality: -

- *past, present, forecast*

Define future service on greenhouse gas

- *emissions, concentrations*

## Policies

- Vienna convention
- Montreal Protocol
- UN Convention on Long-Range  
Transboundary Air Pollution
- UNFCCC
- EU: Clean Air for Europe (CAFÉ)

## Users

JRC-IES	
NILU	
EPA	
UBA-A	
UBA-D	
BVDD	
LUA	
WMO	
ECMWF	
DEFRA	
London	
RIVM	
SYKE	
ADEME	
L'Oreal	
Meteo Fr	
EMPA	
ARPA	
APAT	
VITO/VMM	

# Humanitarian Aid Services

## RESPOND

### Providers:

Infoterra 

Sertit 

Keyobs 

Metria 

DLR 

JRC 

UNOSAT 

Reuters 

Aid 4 Aid 

Kayser-

Threde 

SciSys 

SSTL 

ESYS 

## Services

- **Digital maps & thematic products & services**
- **Instantly available** for rapid orientation & decision making:  
Global coverage
- **For known “Risk Zones”**, proactively updated, available rapidly.
- **For emerging & on-going crisis zones**, created from new data, on a rush basis, as a reactive response.
- **Alert services** to Humanitarian community and coupling of alerts and mapping resources.

## Policies

**United Nations:** mandates of OCHA, UNDP, UNHCR, UNICEF, WFP  
**European:** ECHO [(CE) 1257/96] - to provide emergency assistance & relief to victims of natural disasters or armed conflict outside EU  
**National:** Member states ministries **Local:** Mission of National and International NGOs

### Users:

ECHO 

UN OCHA 

UN HCR 

UNOPS 

UNDPKO 

THW 

Red Cross 

(Germany)

AlertNet 

### Strategy Group

ECHO 

IFRC 

German

Ministry 

# GSE

**Open Partnership Agreement for Each Network**

**Service Level Agreement (between Service Provider and User)**

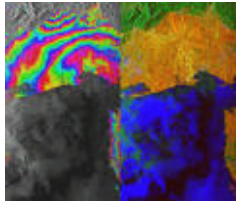
**Co-location Meeting at ESRIN on Dec. 06-08**

*Coordination among GSEs (common Webportal, Data Exchange/Needs etc.)*

*Coordination with EU Fast Track Initiatives (EU Core Services, GSE downstream Services)*

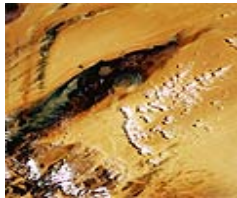
*GSEs as pilot projects for INSPIRE*

# What is Needed for the GMES Space Component ?



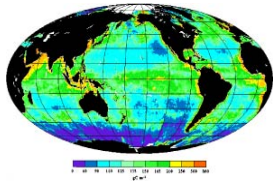
## **Sentinel 1** – SAR imaging

All weather, day/night applications, interferometry



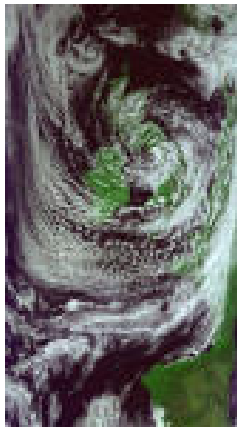
## **Sentinel 2** – Superspectral imaging

Continuity of Landsat, SPOT & Vegetation-type data



## **Sentinel 3** – Ocean monitoring

Wide-swath ocean color and surface temperature sensors, altimeter



## **Sentinel 4** – Geostationary atmospheric

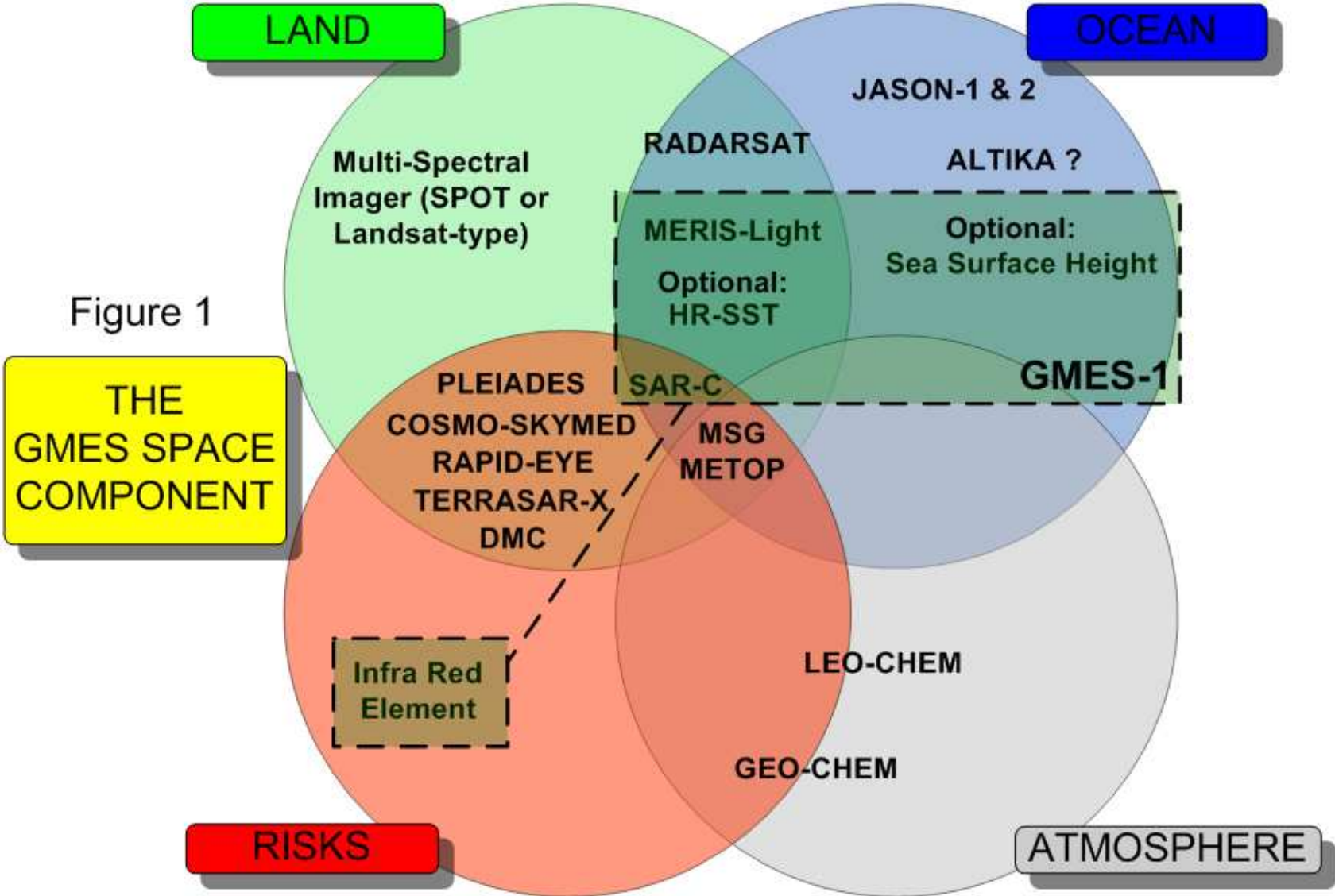
Atmospheric composition monitoring, trans-boundary pollution

## **Sentinel 5** – Low-orbit atmospheric

Atmospheric composition monitoring



# GMES-1: The gap-filler



# GMES Financing & Cooperation Model (Space Component)

- **Co-funding by EC and ESA at ratio 2:1**
  - ESA funds development of new Sentinel satellite families up to phase B
  - Phases C/D are shared co-funded
  - Phase E (operation / exploitation) funded by EC
  - Recurrent satellites & operation of space component fully funded by EC
- **ESA is also ready to continue development of key services**

# ESA Preparatory Activities for GMES Space Component

1. **Socio-economic analysis**
2. **Architecture studies**
3. **Ground Segment**

*Oxygen Concept (O<sub>2</sub> – “open and operational”)*

4. **Space Component**

*Sentinels*

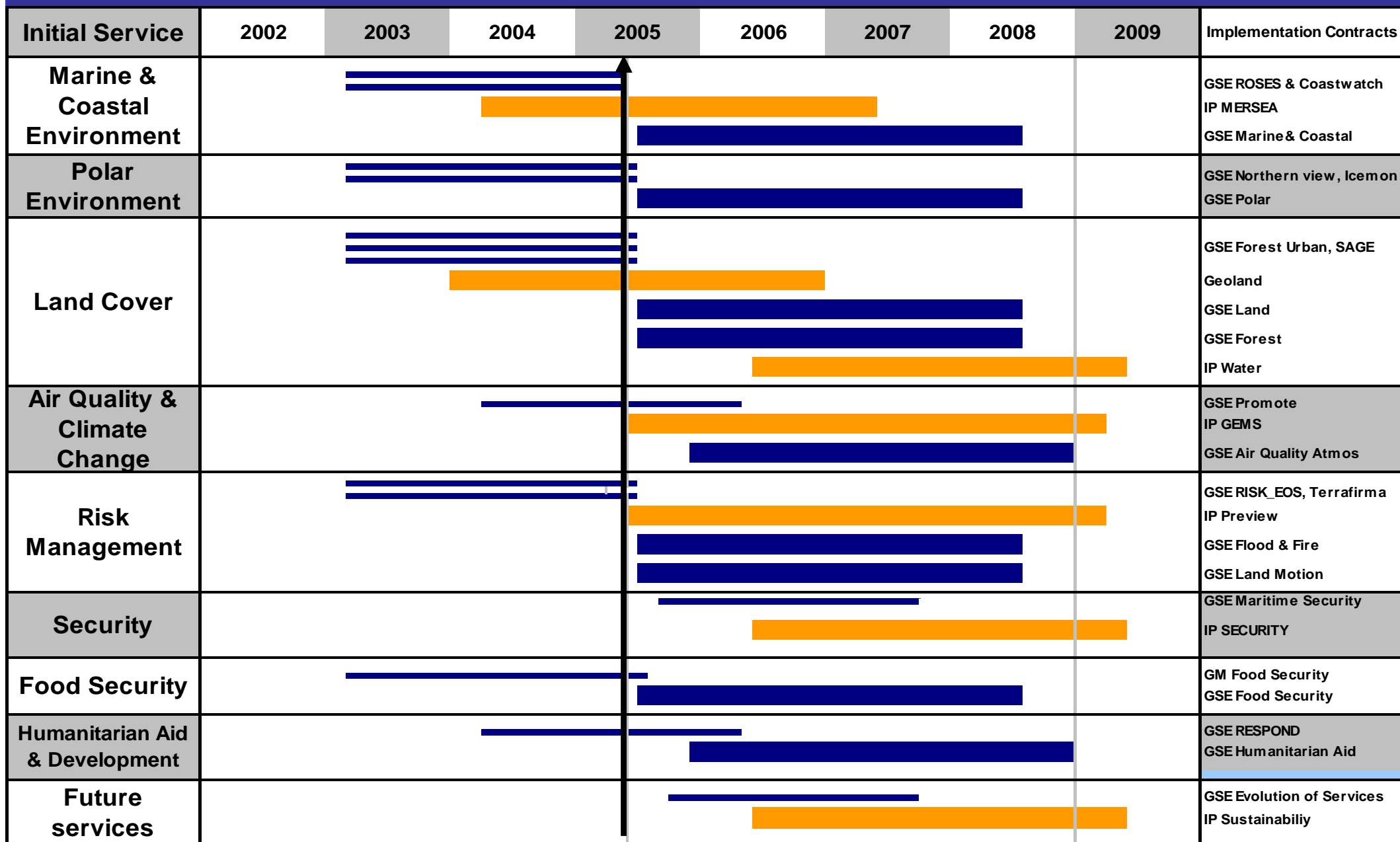
*Coordination with national missions and Eumetsat*

**+ Development of Initial Services: *GSE Programme***

# ESA Ministerial Council : Dec 2005

- **Two new ESA Earth Observation Programmes proposed**
  - **Earth Observation Envelope Programme 3: ~1350 MEuro**
    - 2006-2011
    - Earth Explorer Missions
    - Science and Applications Development
    - Instrument Pre-development
    - Continuity of Missions (Ground Segment & Operations, e.g ENVISAT, ERS )
  - **GMES Space Component Phase-1: ESA has received more than asked for ~250 MEuro for 2006-7**
    - 2006-2011
    - GMES-1 implemented up to in-orbit validation
    - Sentinels 1, 2, 3 up to phase B
    - Sentinels 4, 5 up to phase A
    - Decision on GMES Phase-2 (2008-2013 with EC in 2007).

# Coordinated EC-ESA Implementation of GMES Services 2002 - 2008



GSEITT 1

FP6 call 1

FP6 call 2

GSEITT2

FP6 call 3

# GMES Schedule

<b>2001</b>	<b>GMES on Ministerial agenda; ESA GMES Service Element approved by Min. Council</b>
<b>2003</b>	<b>European White Paper on Space</b>
<b>2004</b>	<b>GMES Interim Report</b>
<b>2004/5</b>	<b>ESA, EC, MS Coordination</b> -> GPO, GAC -> <i>GMES Initial Services</i> -> <i>GMES Pilot Services</i>
<b>2005</b>	<b>Implementation proposal to ESA Ministerial Council, EU Space Council</b>
<b>2006</b>	<b>EC BUDGET Decision</b>
<b>2007</b>	<b>Decision on GMES Space component Phase 2</b>
<b>2008+</b>	<b>“European GMES capacity” developed, operational services start...</b>
<b>2012+</b>	<b>GMES full capacity</b>

**GEO**