

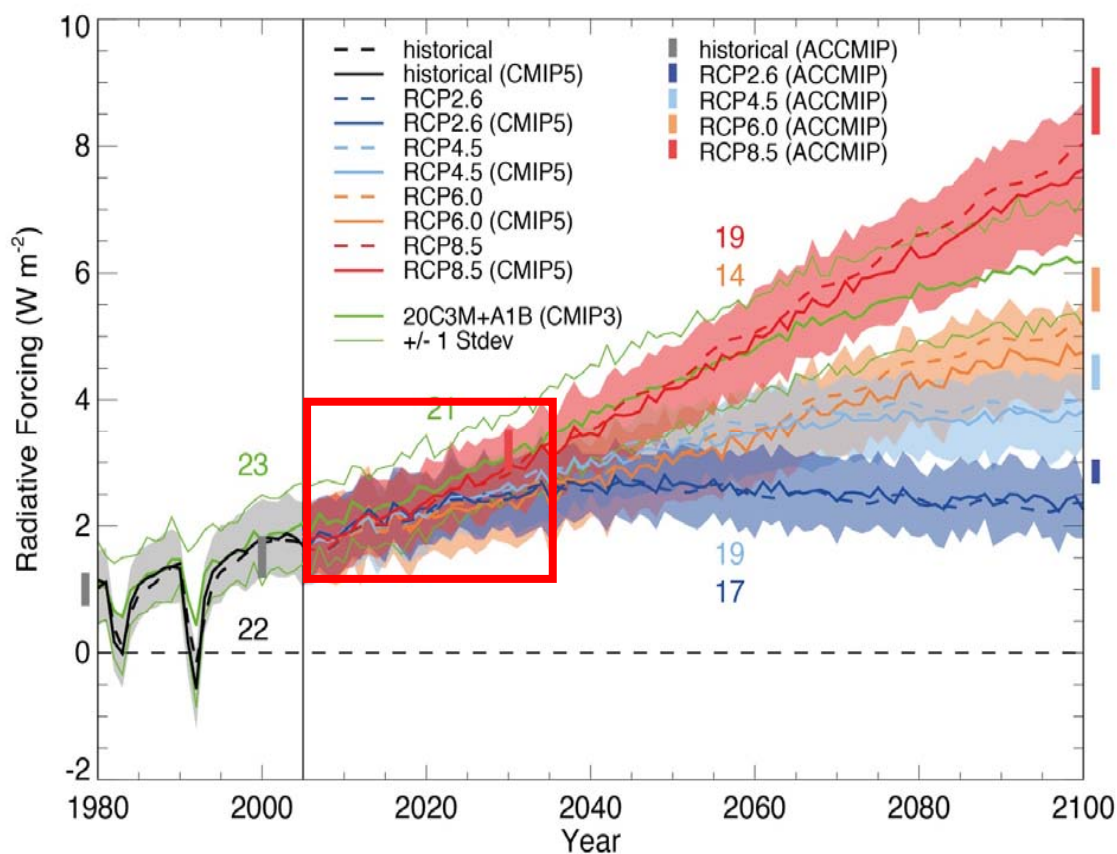
# Near-term predictions and projections as sources of climate information

F.J. Doblas-Reyes  
ICREA, BSC and IC3, Barcelona, Spain



Global mean radiative forcing ( $\text{Wm}^{-2}$ , dashed) and effective radiative forcing (solid) with 1850 as baseline.

There is little difference between the RCPs before 2040.

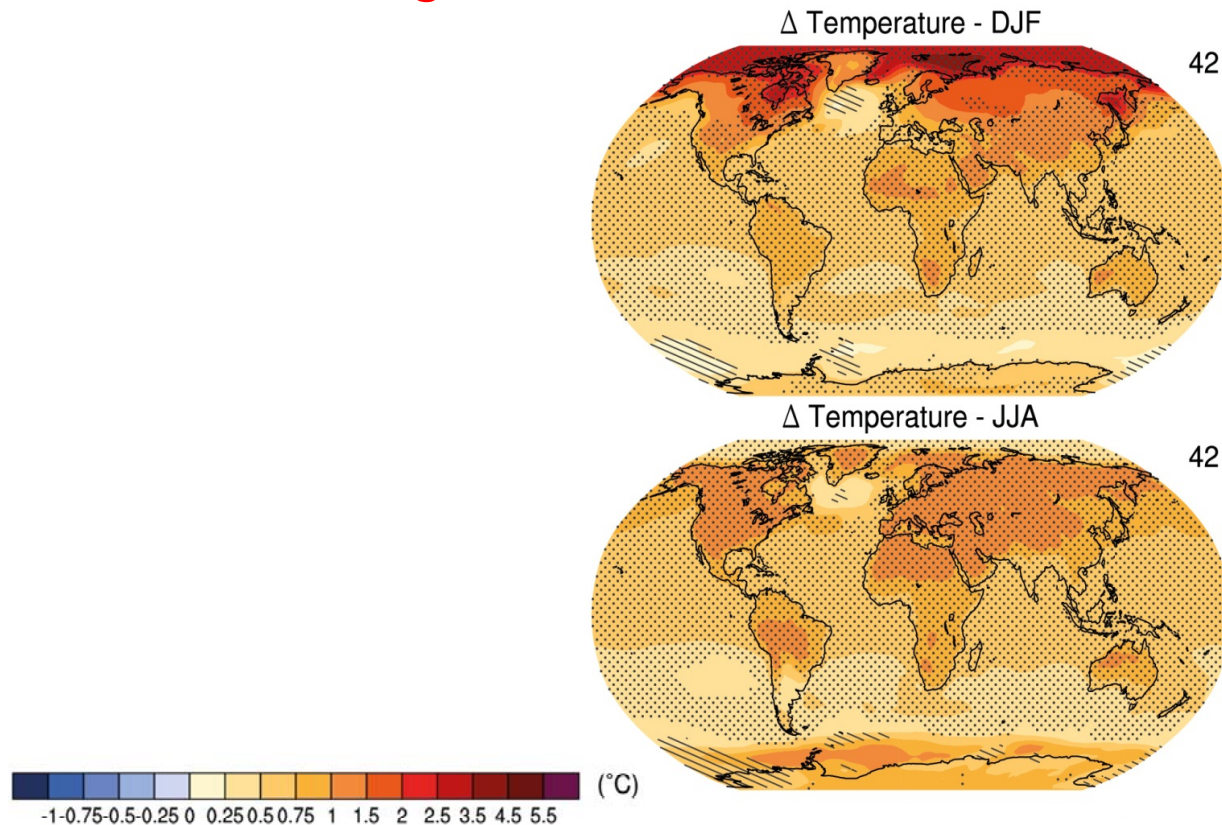


# Near-term projections



Seasonal-mean air temperature change for the RCP4.5 scenario over **2016-2035** (wrt 1986-2005). Stippling for significant changes, hatching for non-significant.

**The meridional gradient decreases (it increases at the tropopause).**

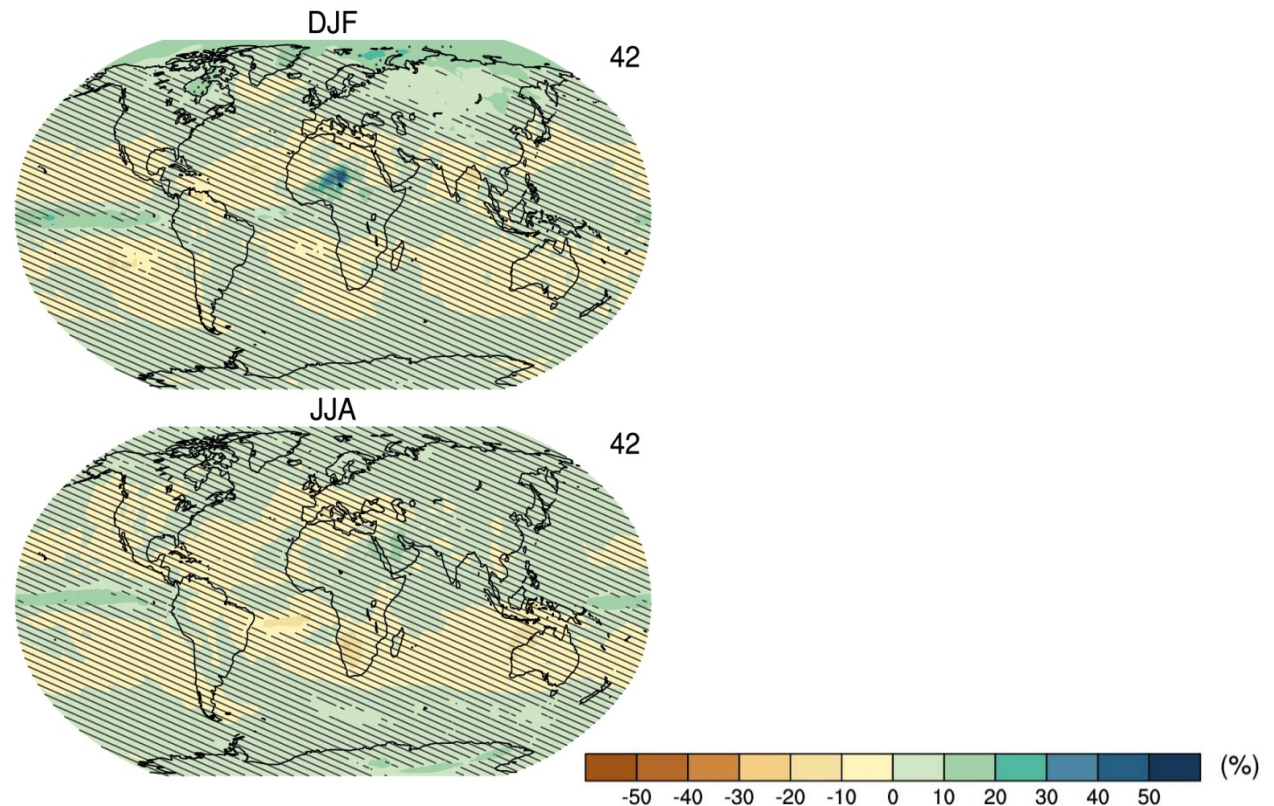


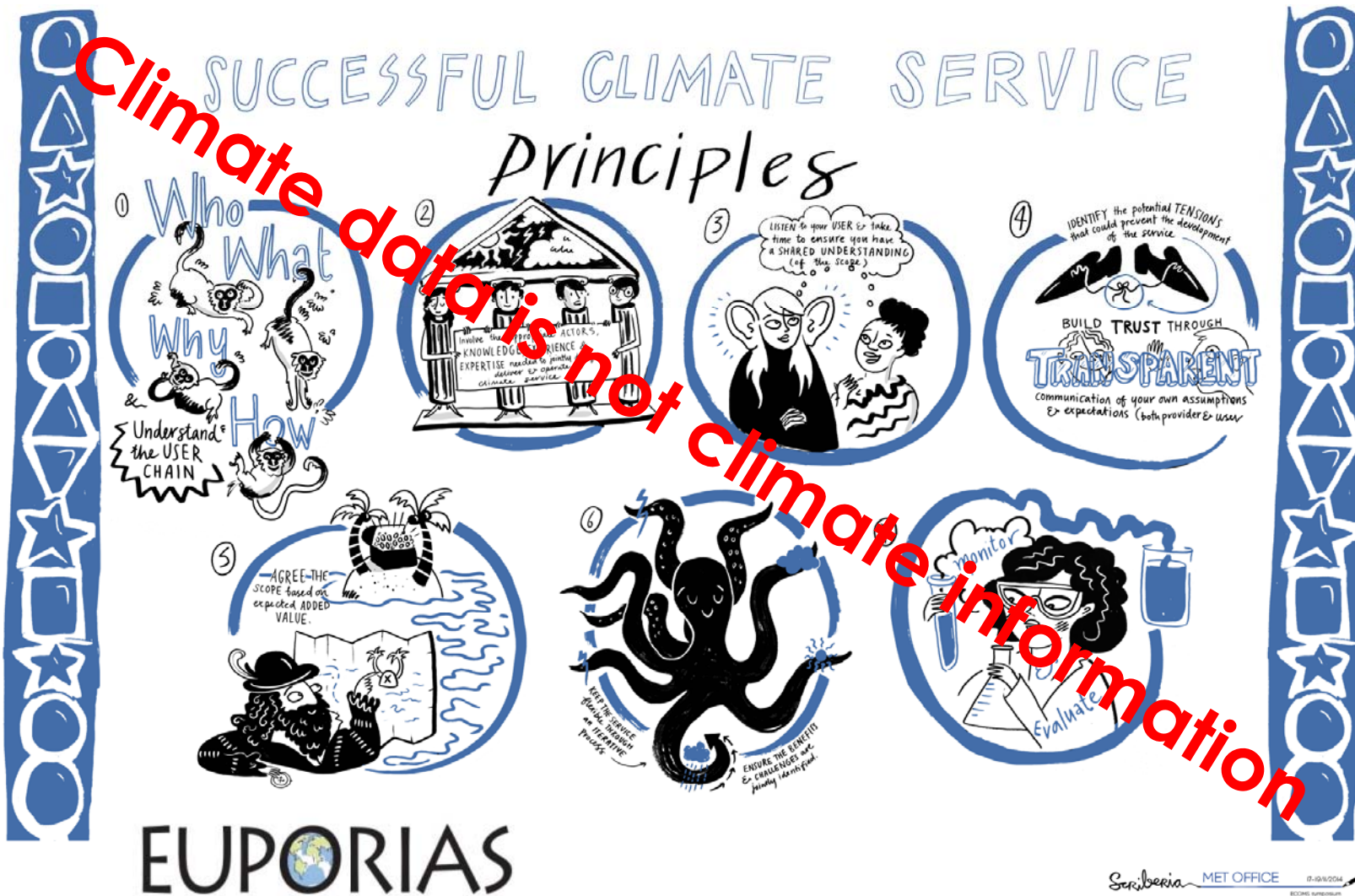
# Near-term projections



Seasonal-mean precipitation change for the RCP4.5 scenario over **2016-2035** (wrt 1986-2005). Stippling for significant changes, hatching for non-significant.

**Larger uncertainty, moister Arctic in winter.**







## Near-term requests from users



Bodegas Torres (a Spanish winery) is looking for new locations for its vineyards (and it's not the only one doing it).

Land is being purchased closer to the Pyrenees, at higher elevation. They are considering acquiring land in South America too, in areas where wine is currently not produced.

Bodegas Torres requests local climate information (including appropriate uncertainty assessments) for the vegetative cycle of the vine, which lasts 30-40 years.

The user needs to make the decision now.



The Catalan government has requested the climate community the preparation of the Third Report on Climate Change for Catalonia.

A broad range of socio-economic sectors (including private actors) are involved: agriculture, energy, tourism, ecosystems, etc.

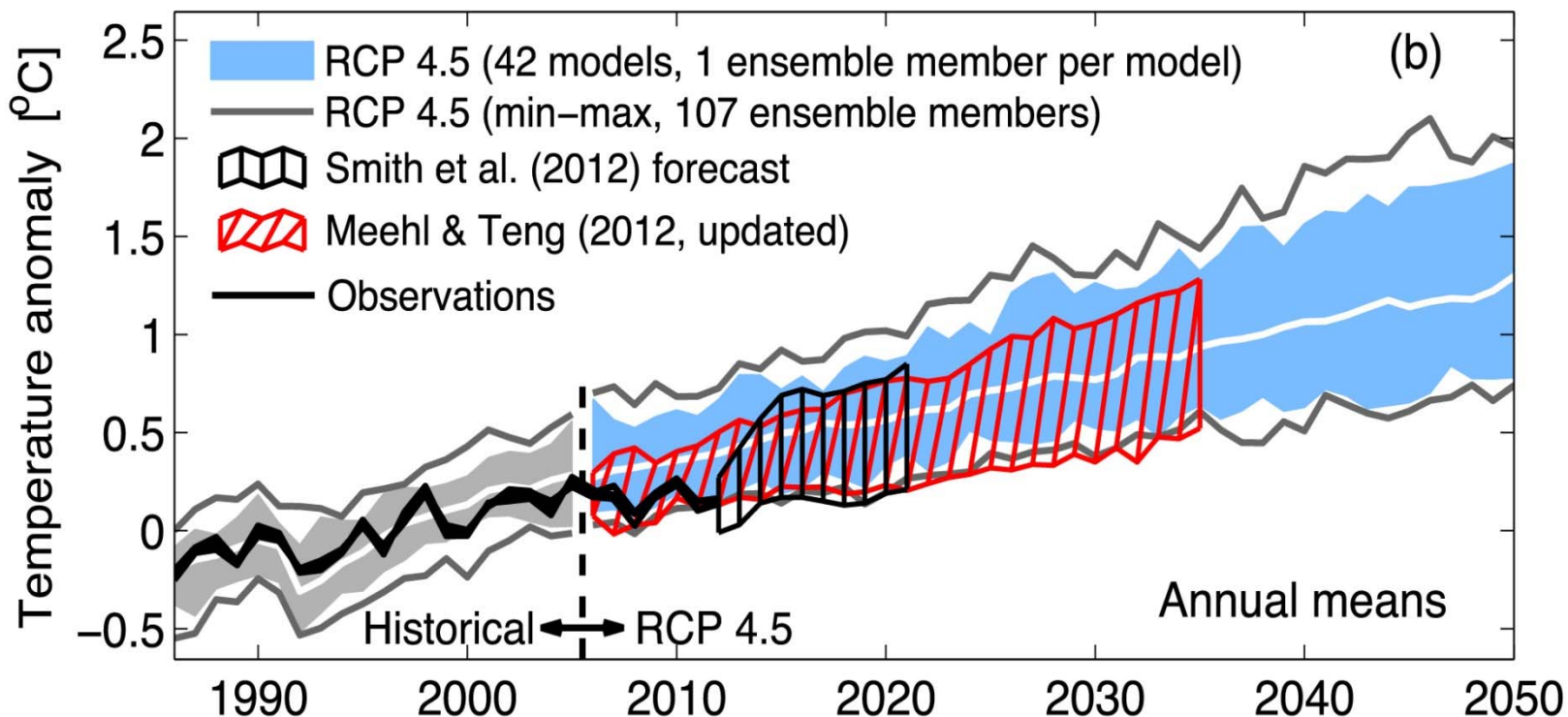
Users requested a focus on 2031-2050, but also 2015-2024.

How should we merge the information from global and regional projections? How to build stories from the short to the mid term?

2031-2050	Winter	Spring	Summer	Autumn	Annual
Litoral	0.6 (0/1.2)	0.7 (0.3/1.1)	0.9 (0.3/1.5)	0.8 (0.3/1.2)	0.8 (0.5/1)
	0.4 (-27/22.4)	-5.7 (-27.9/22.6)	-4.1 (-19.5/20.7)	-7.9 (-26/25.2)	-2.6 (-20.1/5.7)
Interior	0.6 (0/1.1)	0.7 (0.2/1.4)	0.8 (0.4/1.7)	0.9 (0.2/1.2)	0.8 (0.5/1)
	2.5 (-17.6/29.1)	-6.6 (-24.6/24.6)	-3.4 (-21.4/13.9)	-5 (-21.6/25.4)	-0.2 (-14.3/8.3)
Pirineu	0.7 (-0.1/1.2)	0.8 (0.3/1.5)	0.9 (0.5/1.7)	0.9 (0.3/1.3)	0.8 (0.5/1.2)
	2.4 (-13.8/35.3)	0.0 (-22.7/17.4)	-3.3 (-21.2/11.8)	-0.8 (-21.9/18.8)	-1.2 (-8.8/7.8)
Catalunya	0.7 (0/1.2)	0.7 (0.3/1.4)	0.8 (0.4/1.6)	0.8 (0.3/1.2)	0.8 (0.5/1)
	1.0 (-18.7/19.8)	-3.9 (-24.9/17.9)	-4.1 (-19.8/13.8)	-5.4 (-22.9/21.8)	-2.4 (-13.6/5.4)

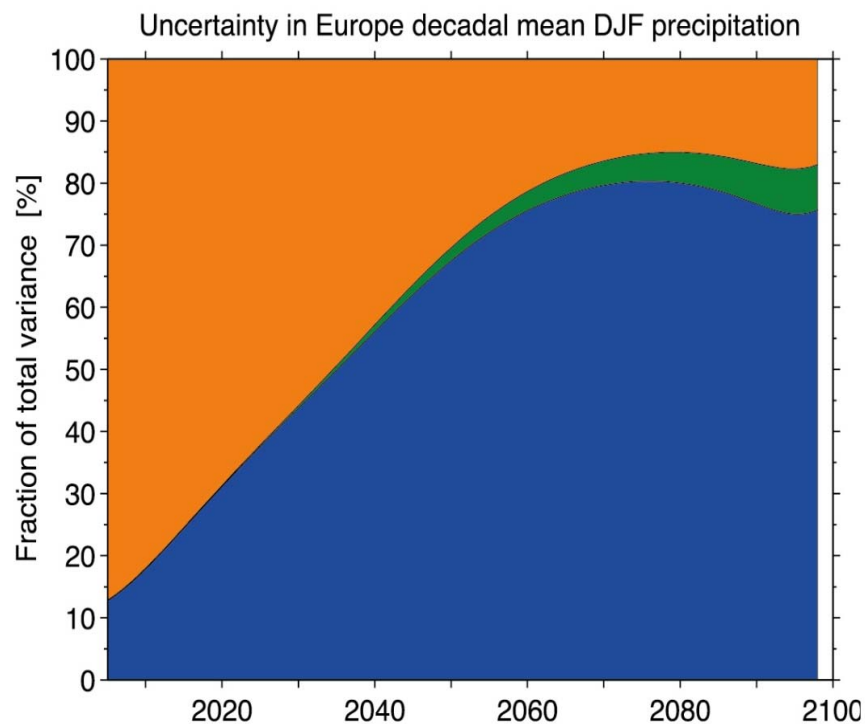
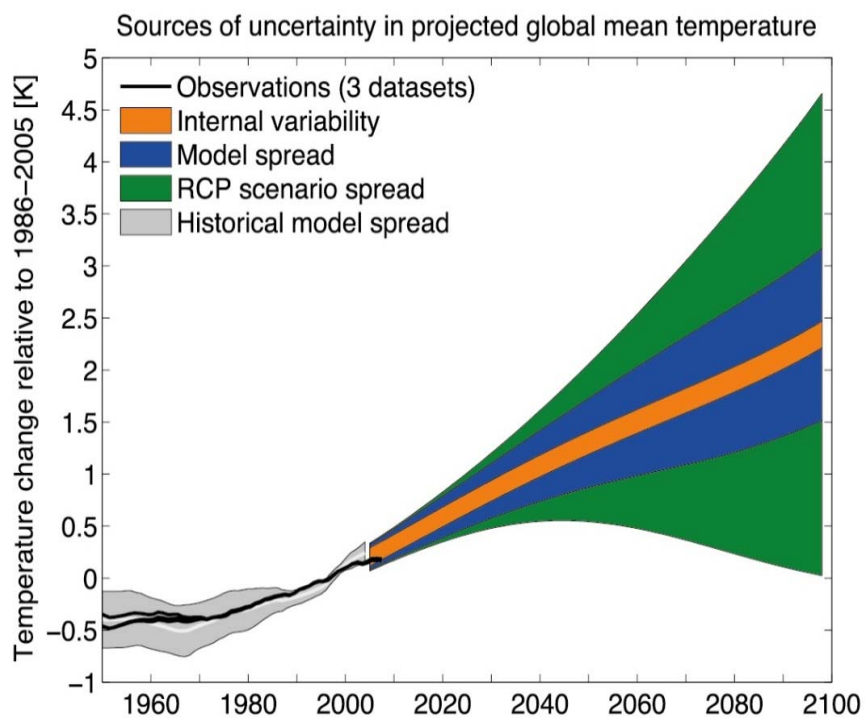
Annual-mean global-mean temperature predictions and projections from CMIP5.

Decadal predictions allow to phase in the internal variability and to correct the forced model response, aspects that a priori make it superior to projections in the near term.



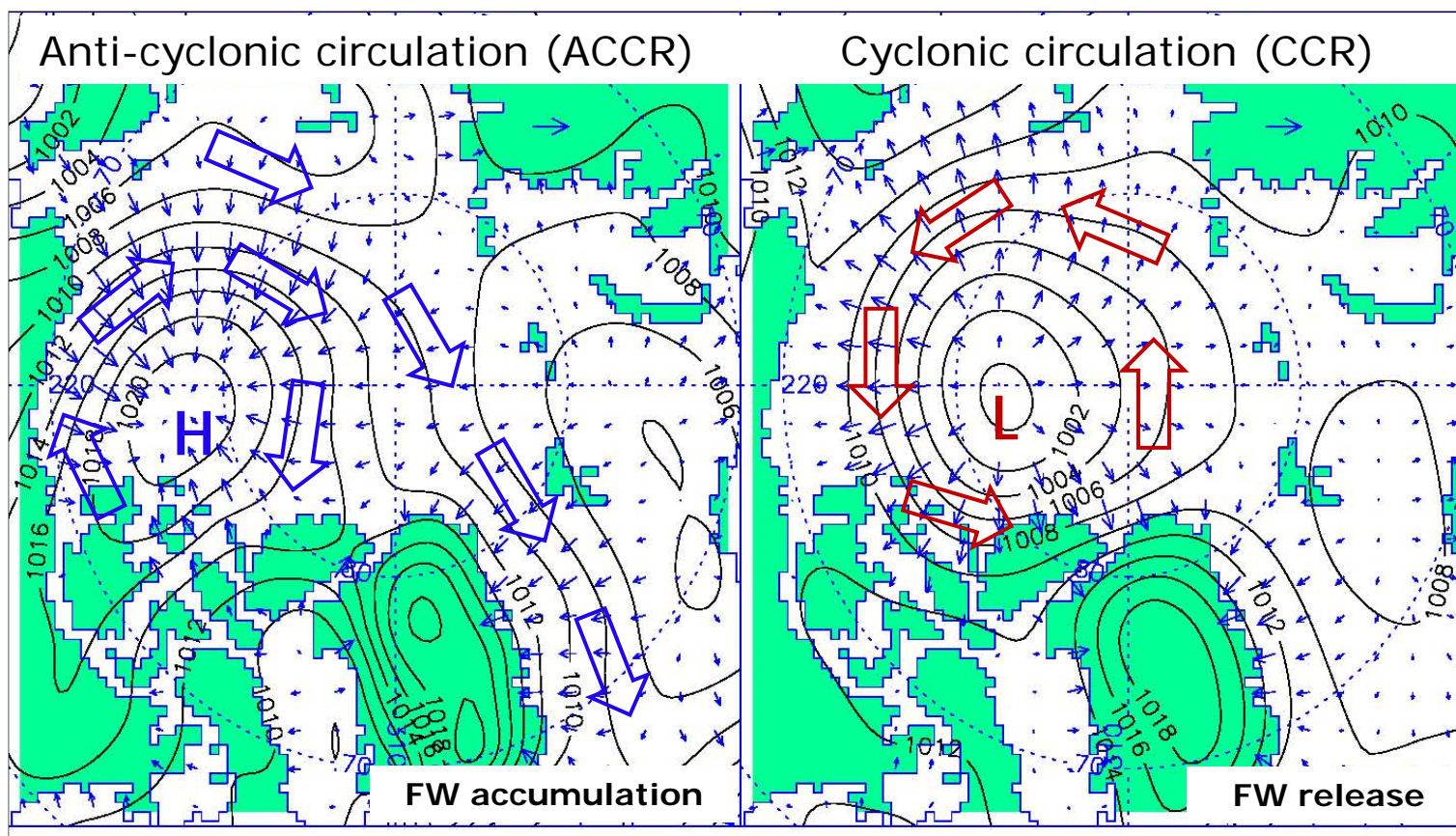


The sources of uncertainty include the internal variability, model differences and scenario spread. The internal variability is an uncertainty source particularly important for the near term that could be reduced, especially at regional scales.

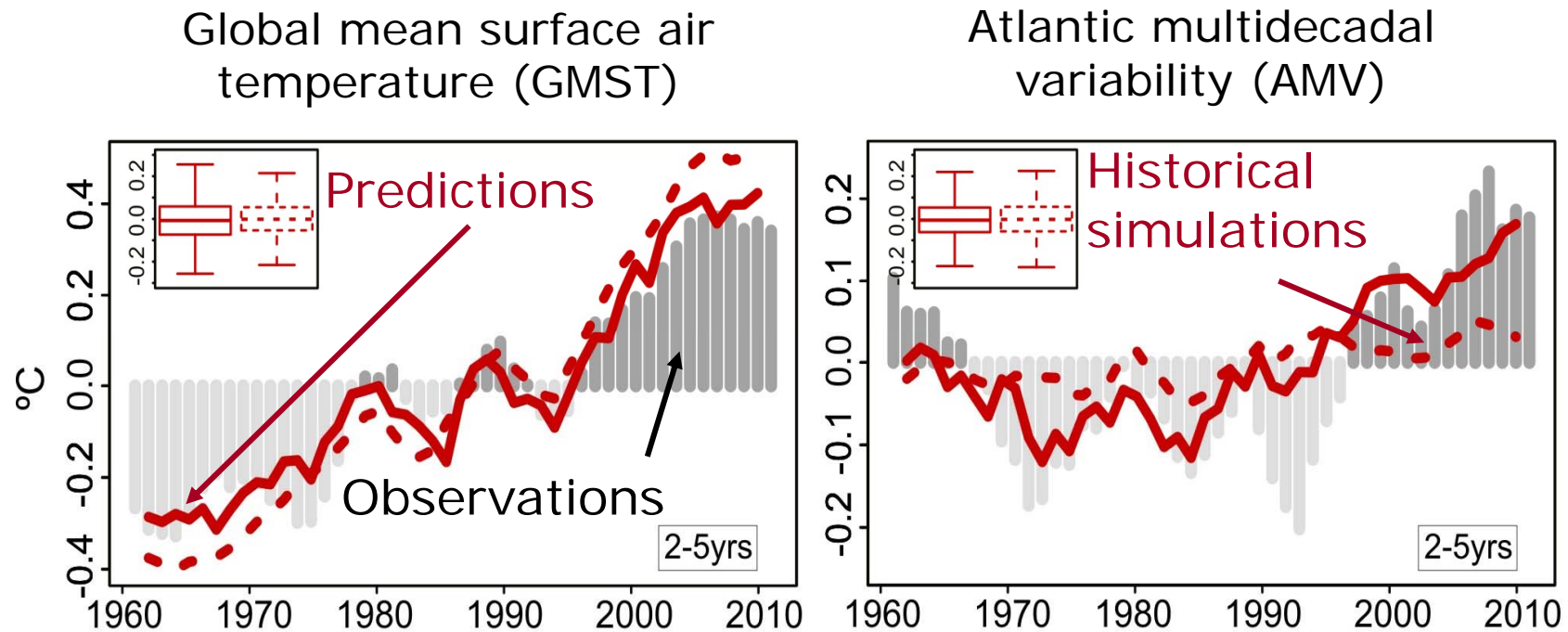


Changes in atmospheric circulation will advect the freshwater accumulated in the Arctic Ocean in the last 15 years (e.g. the GSA).

SLP (black lines, hPa), wind (large arrows) and Ekman transport (blue small arrows) typical for ACCRs (left, Ekman transport converging) and CCRs (right, Ekman transport diverging).



CMIP5 decadal predictions. Global-mean near-surface air temperature and AMV against GHCN/ERSST3b for forecast years 2-5. **The initialized experiments reproduce the GMST trends and the AMV variability and suggest that initialization corrects the forced model response and phases in some of the internal variability.**



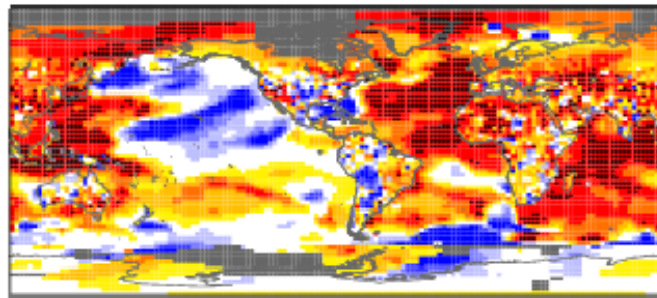
# Do predictions have skill?



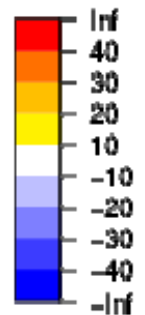
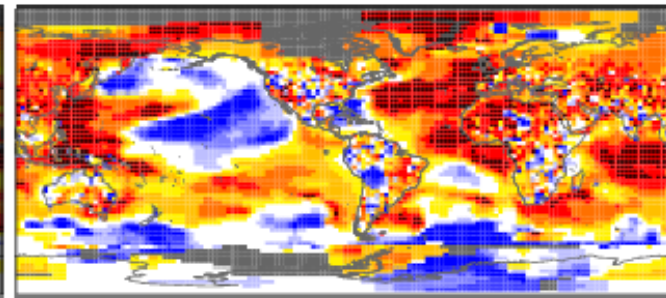
(Top row) Root mean square skill score (RMSSS) of the ensemble mean of the initialised predictions and (bottom row) ratio of the root mean square error (RMSE) of the initialised and uninitialised predictions for the near-surface temperature from the multi-model CMIP5 experiment (1960-2005) for (left) 2-5 and (right) 6-9 forecast years. Five-year start date interval.

**RMSSS of the ensemble mean of decadal predictions**

Forecast year 2-5



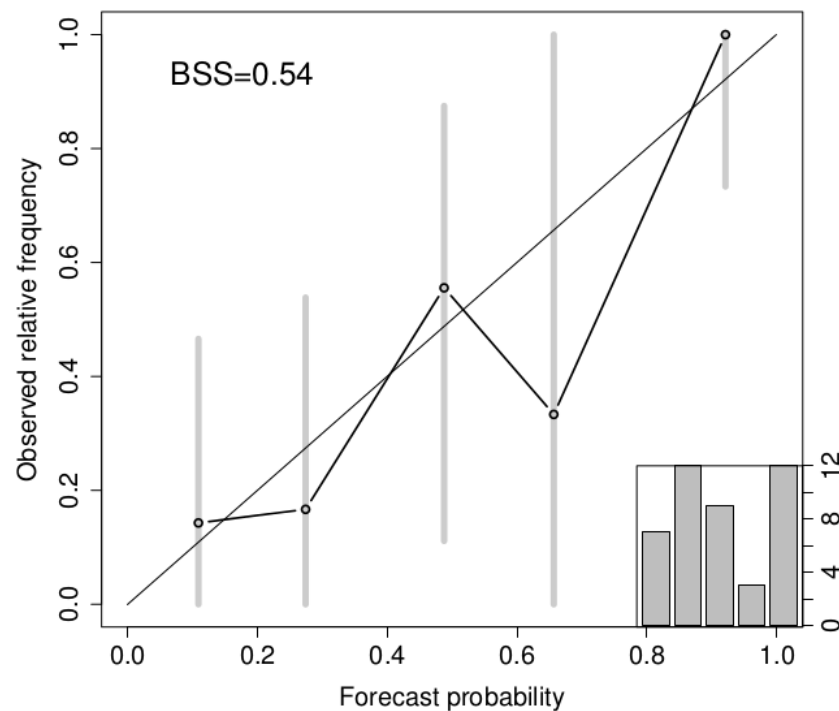
Forecast year 6-9



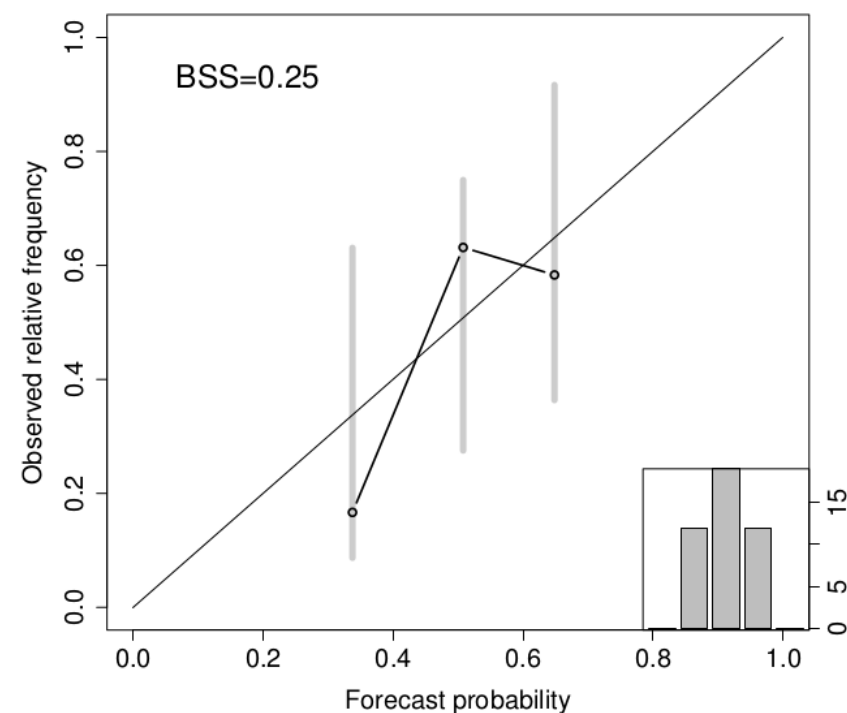
Reliability diagrams of left) initialised and right) uninitialised MME simulations for the **Atlantic multi-decadal variability**. Results for 2-9 year averages above the climatological median over 1961-2009.

Some of the added value of the predictions is their better management of uncertainty, which leads to increased **credibility**.

Decadal AMV 2–9 years | median

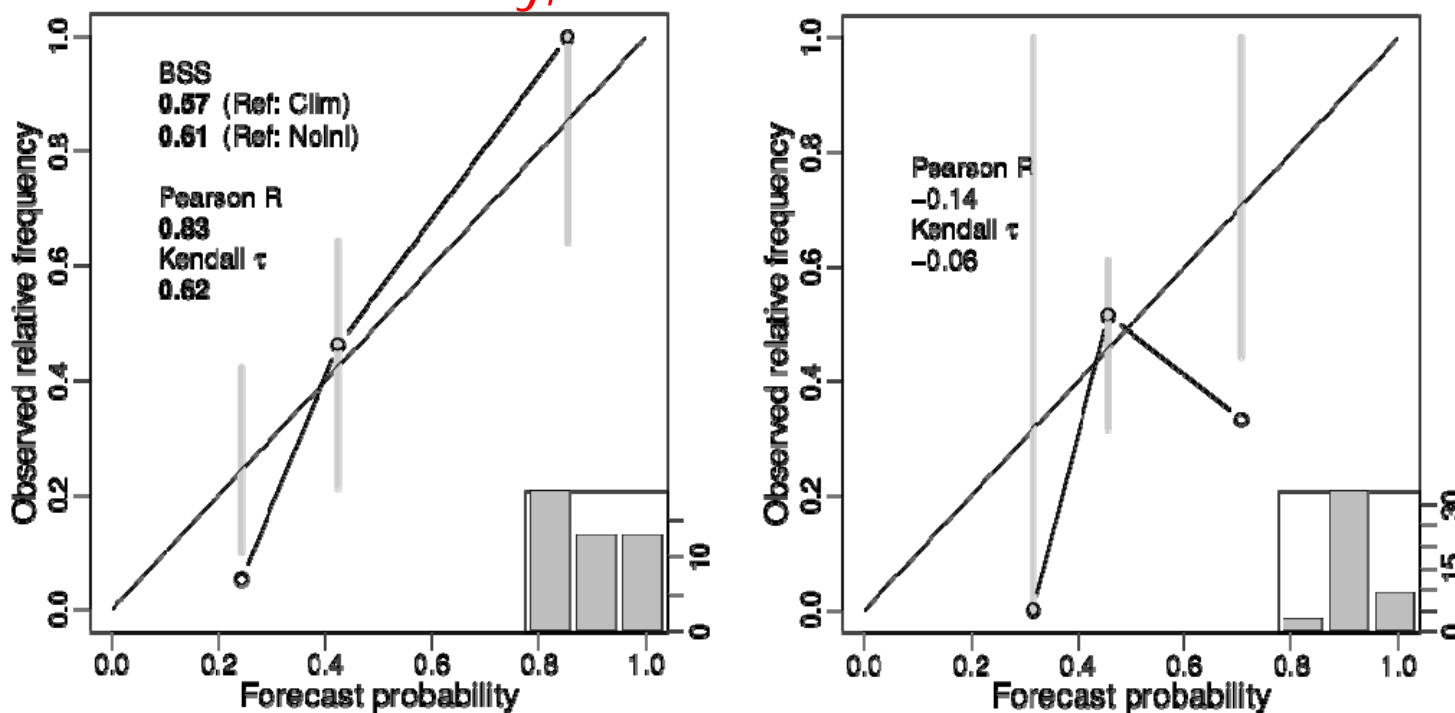


Historical AMV 2–9 years | median

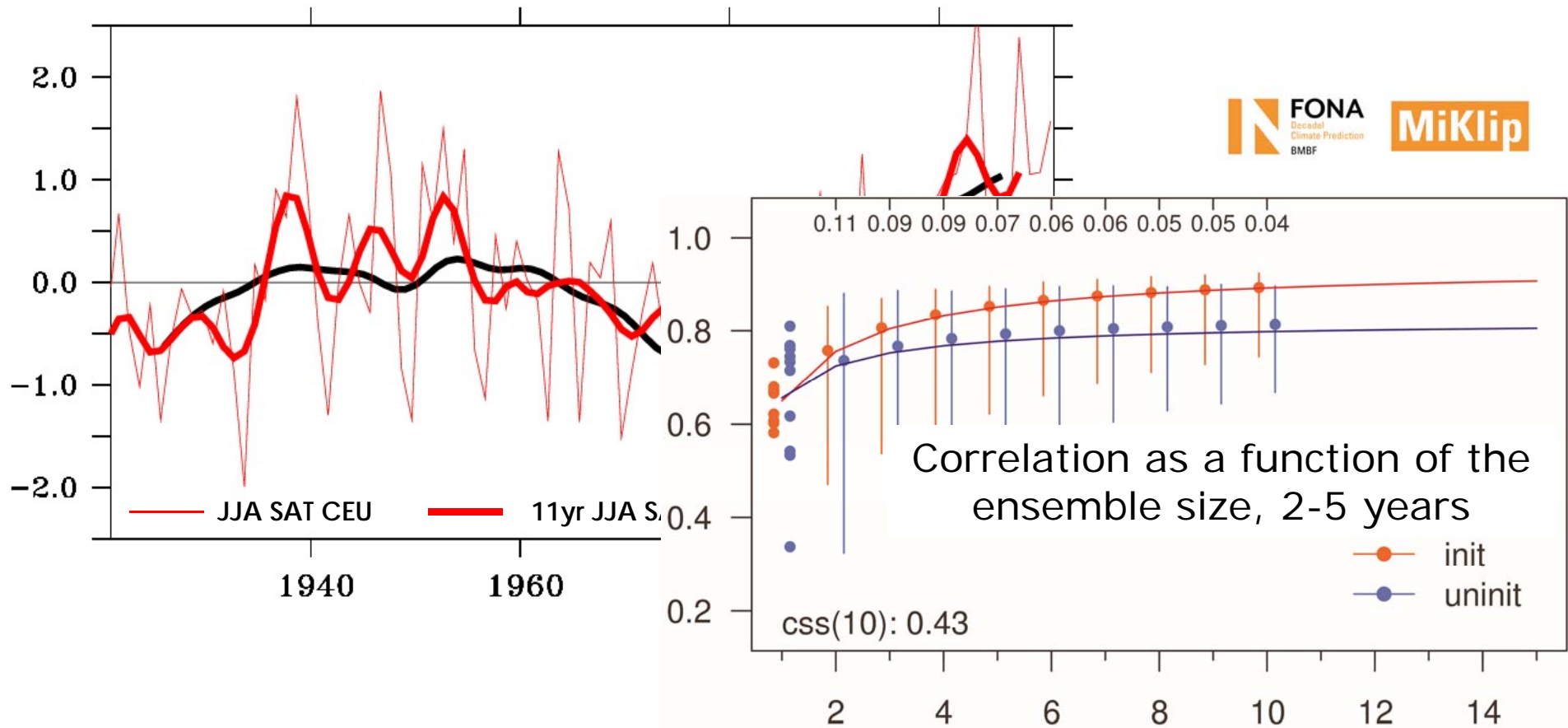


Reliability diagrams of left) initialised and right) uninitialised MME simulations for basin-wide **accumulated cyclone energy** (ACE). The results are for 2-9 year averages above the climatological median over 1961-2009. Statistically significant values are in bold.

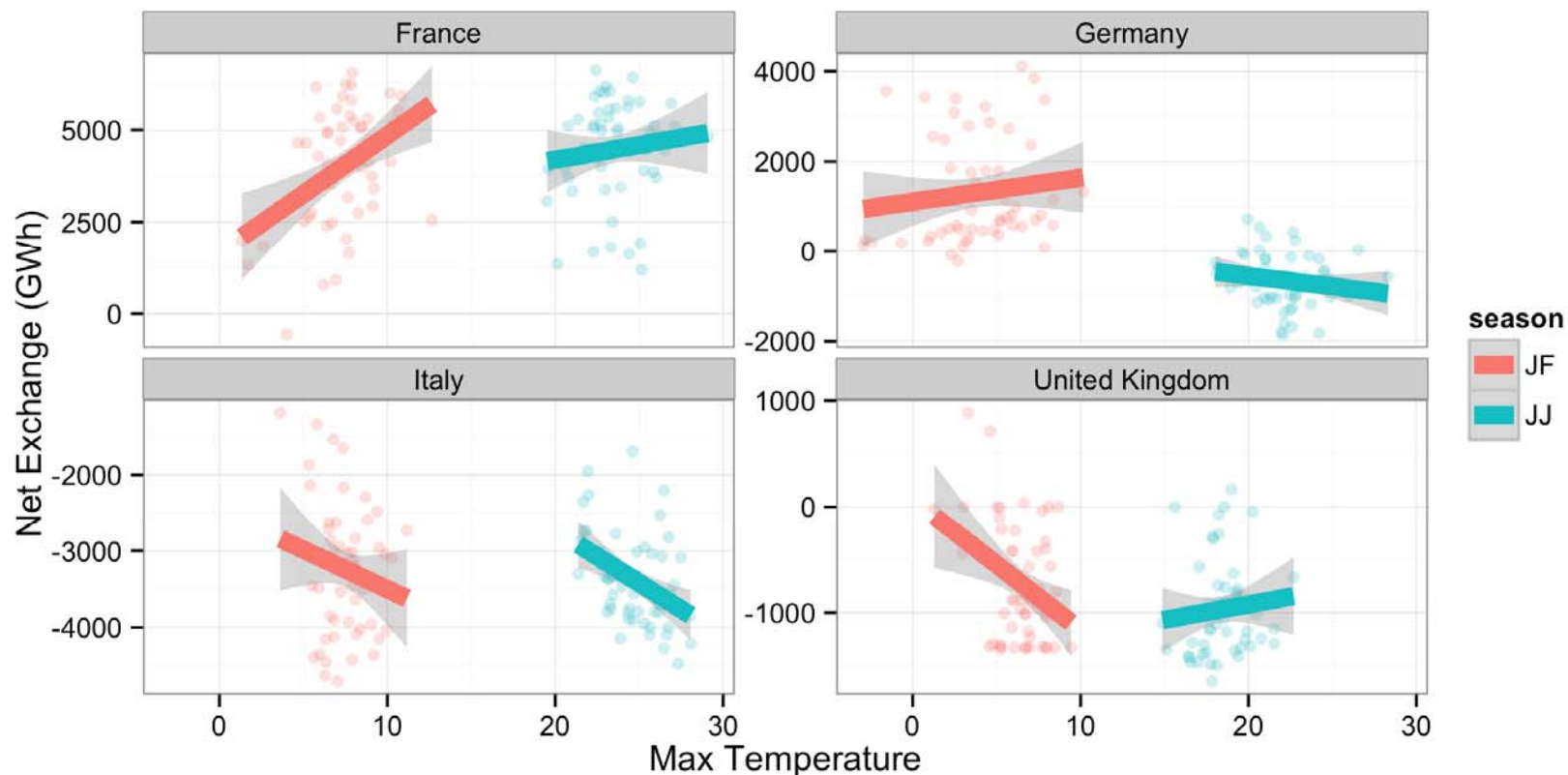
Some of the added value of the predictions is their better management of uncertainty, which leads to increased **credibility**.



Time series of central European summer temperature and skill of the MiKlip system.



Climate affect exchanges via electricity demand (heating or cooling, from the customer point of view) and renewable-energy production.



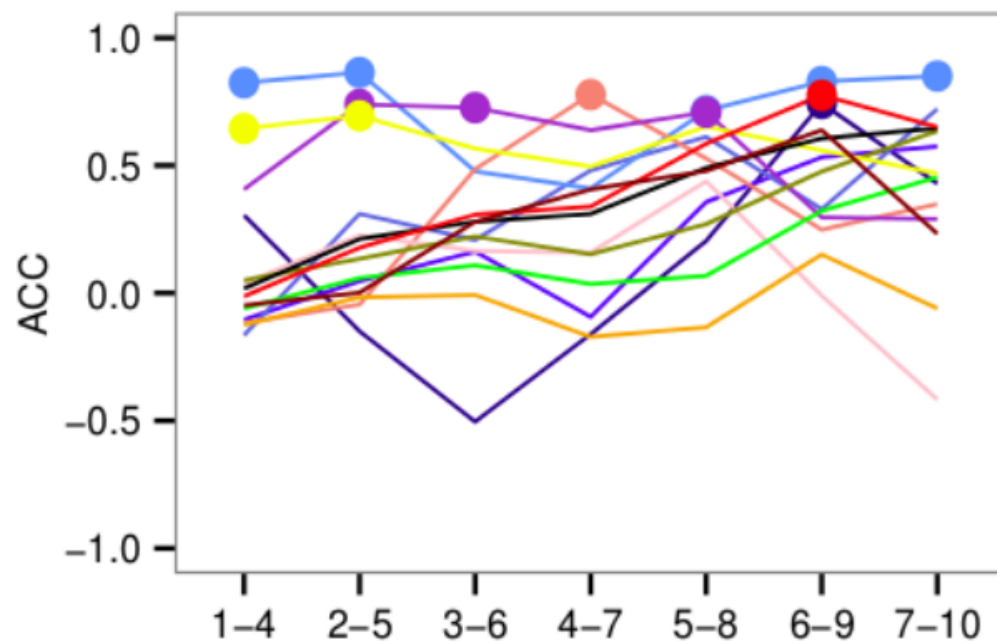


Correlation of the ensemble mean of a set of CMIP5 predictions and historical simulations for the post-processed West African monsoon precipitation index.

Skill for initialized simulations is shifted to higher values for all forecast times.

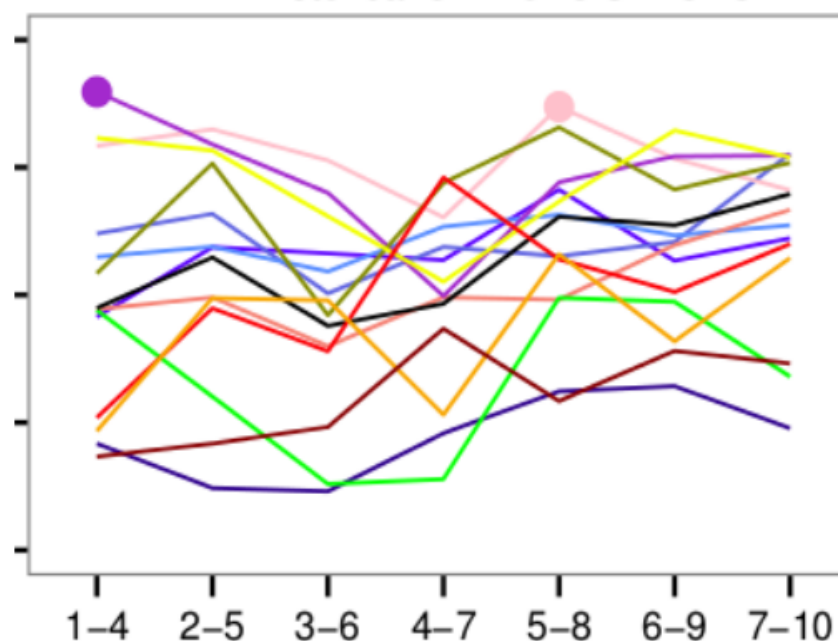
## Decadal hindcasts

WAMI–Decadal CMIP5 vs SPI CRU



## Historical runs

WAMI–Historical CMIP5 vs SPI CRU

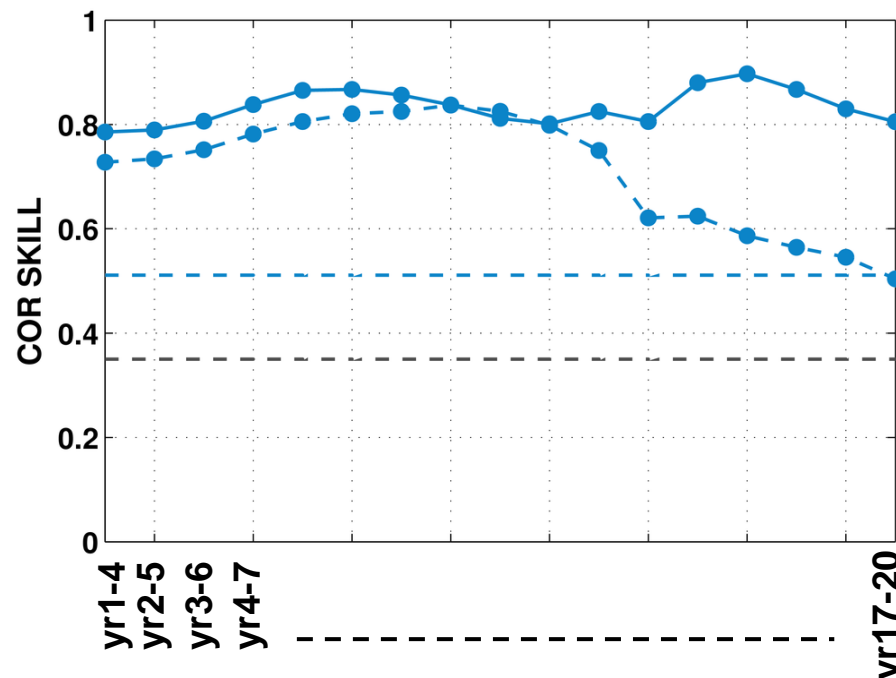


# 20-year predictions



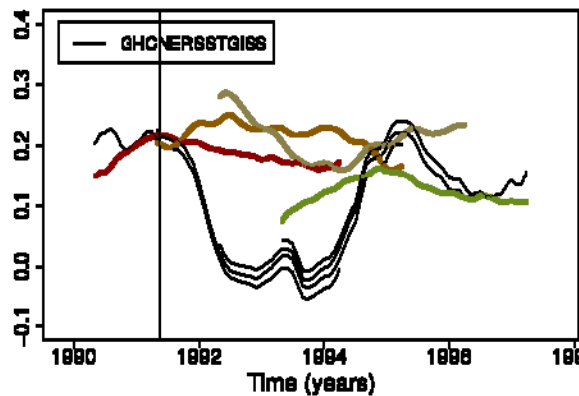
Correlation of the ensemble mean of North Atlantic subpolar gyre SST for initialised (solid) and uninitialised (dashed) six-member ensemble simulations made with the MPI-ESM-LR. The results are for four-year averages over 1961-2012.

Added value of the initialisation is found beyond 10 forecast years.

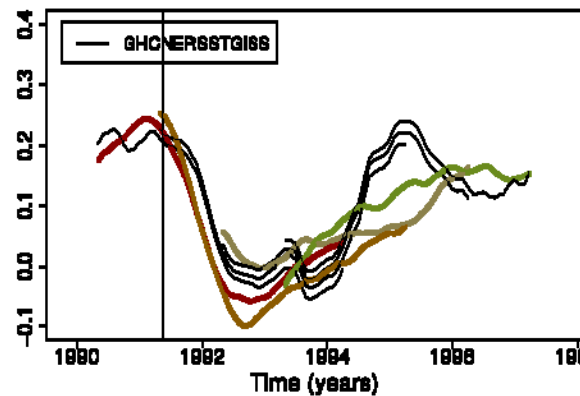


Global-mean surface temperature before and after the Pinatubo eruption simulated by EC-Earth 2.3 with five-member ensemble hindcasts. Observational data is a mix between GHCN, ERSST and GISS.

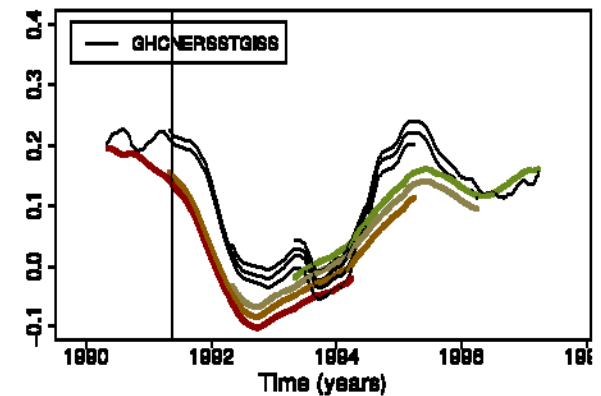
Both the initialisation and the volcanic forcing specification improve the simulations.



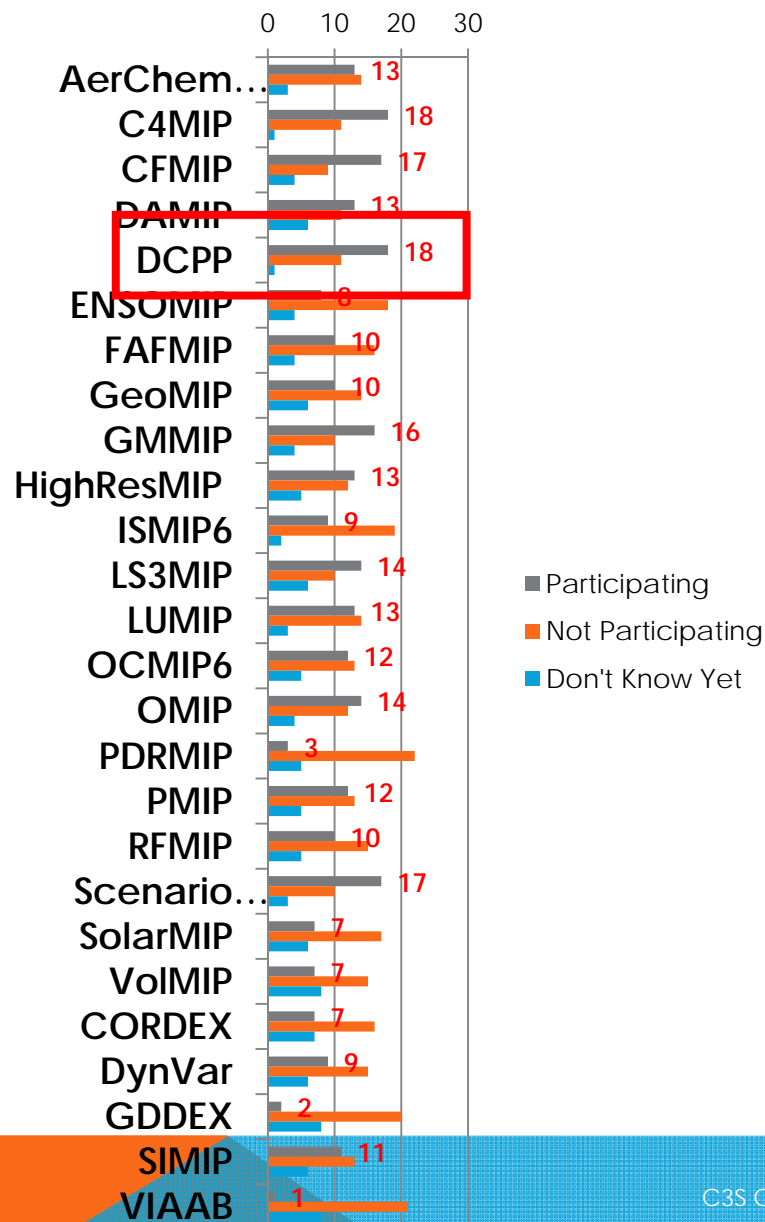
**Initialisation and no volcanoes**



**Initialisation and volcanoes**



**No initialisation and volcanoes**



- The CMIP6 decadal contribution is managed by DCP (WGSIP, WGCM, DCVP-CLIVAR).
- Three components: hindcasts, forecasts and predictability exercise.
- DCP benefits from joining CMIP6:
  - Better understanding of model error
  - Control runs for predictability
  - Infrastructure
- Other MIPs benefit from DCP:
  - Reduction of model errors by understanding drift sources
  - Forecast quality assessment
- Interest to participate expressed by a large number of institutions.



# Real-time decadal prediction



The multi-model real-time decadal prediction exchange is a research exercise that guarantees equal ownership to the contributors. WMO-CCI plans to sponsor this activity.

<http://www.metoffice.gov.uk/research/climate/seasonal-to-decadal/long-range/decadal-multimodel>

## Multi-model decadal forecast exchange

The Met Office coordinates an informal exchange of near-real time decadal predictions. Many institutions around the world are developing decadal prediction capability and this informal exchange is intended to facilitate research and collaboration on the topic.

[The contributing prediction systems](#) are a mixture of dynamical and statistical methods. The prediction from each institute is shown below, alongside an average of all the models. When possible, observations for the period of the forecast are also shown. Currently three variables are included: surface air temperature, sea-level pressure and precipitation. These are shown as differences from the 1971-2000 baseline. More diagnostics, including ocean variables are planned for the future. Please use the drop-down menus below to explore the data collected to date.

This work is supported by the European Commission SPECS project.



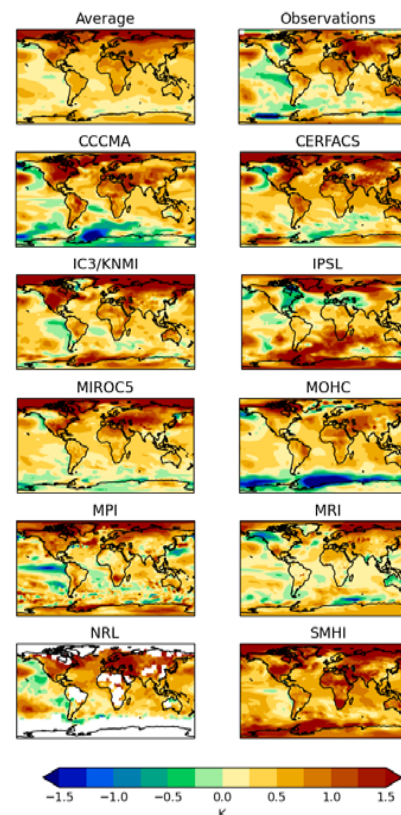
To learn more about decadal forecasts at the Met Office, see our current [decadal forecast](#).

Images last updated 2014-06-25

Issued  Period  Element

Decadal forecast exchange 2013 predictions for year 1 surface air temperature

2012 predictions for 2013 surface temperature



A series of fact sheets has been started (available from the SPECS web site). Common vocabulary with EUPORIAS, targeting a wide audience, mimicking some material already existing to explain what climate change is.

SPECS Fact sheet #2

## What is a decadal prediction?

October 2014

Weather is chaotic which limits its predictability to one or two weeks. This means that it will never be possible to extend normal weather forecasts to seasonal time-scales and beyond.

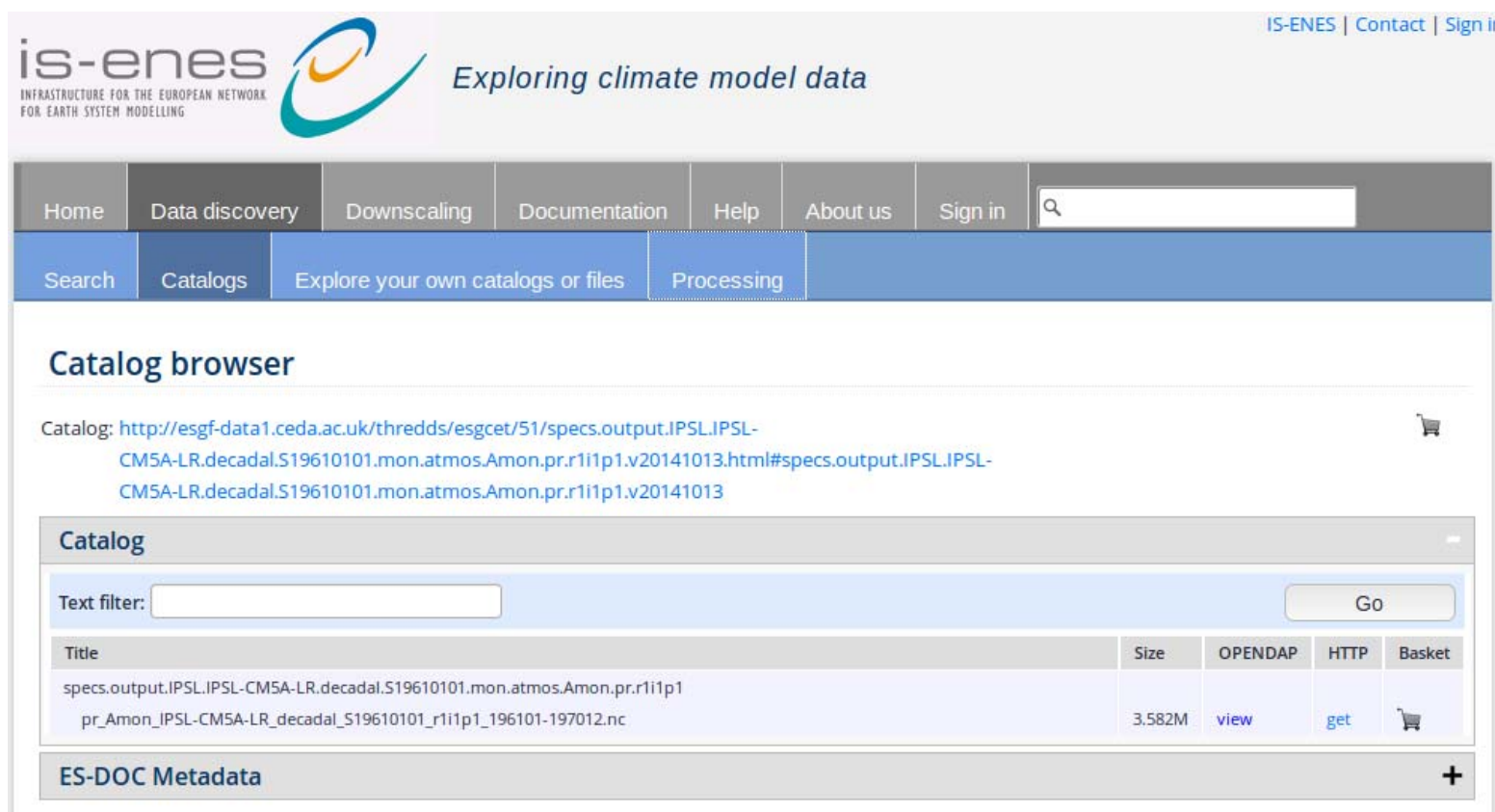
For example, we will never be able to predict the weather on a specific date in a specific place years in advance. However, **changes in prevailing weather over the course of several months to years are potentially predictable**. For instance we may be able to say if a particular region might expect, on average, colder winters or drier summers. Such changes in weather patterns occur due to the interaction of the atmosphere with more slowly varying parts of the Earth system.



Weather is a result of energy moving through the Earth system. Energy is originally radiated to the Earth from the Sun, with most being re-emitted or reflected back to space. The amount that remains in the Earth system is modulated by many things: some emerge naturally within the system (*internal variability*), whilst others are controlled by external factors such as variations in solar output, greenhouse gases, and atmospheric particles

The SPECS data are now visible from the Climate4impact portal  
<http://climate4impact.eu>.

Lots of work still missing: e.g. use cases and processing demonstration video for climate predictions, etc



is-enes *Exploring climate model data* IS-ENES | Contact | Sign in

INFRASTRUCTURE FOR THE EUROPEAN NETWORK FOR EARTH SYSTEM MODELLING

Home Data discovery Downscaling Documentation Help About us Sign in

Search Catalogs Explore your own catalogs or files Processing

### Catalog browser

Catalog: <http://esgf-data1.ceda.ac.uk/thredds/esgcat/51/specs.output.IPSL.IPSL-CM5A-LR.decadal.S19610101.mon.atmos.Amon.pr.r1i1p1.v20141013.html#specs.output.IPSL.IPSL-CM5A-LR.decadal.S19610101.mon.atmos.Amon.pr.r1i1p1.v20141013>

**Catalog**

Text filter:  Go

Title	Size	OPENDAP	HTTP	Basket
specs.output.IPSL.IPSL-CM5A-LR.decadal.S19610101.mon.atmos.Amon.pr.r1i1p1 pr_Amon_IPSL-CM5A-LR_decadal_S19610101_r1i1p1_196101-197012.nc	3,582M	<a href="#">view</a>	<a href="#">get</a>	

ES-DOC Metadata +

- Requests for climate information for the next 30 years come from a **broadening range of users** and should be addressed from a climate services perspective.
- **Different tools** are available to provide near-term climate information (global and regional projections, decadal predictions, empirical systems, etc). **Merging all this information** into a reliable, unique source is a problem still not solved.
- The community is maturing quickly and there are **successful stories** of interactions with users. **C3S might want to taken note of this because requests will come.**
- None of this will materialize without appropriate **investment in observational networks and reduction of all aspects of model error.**